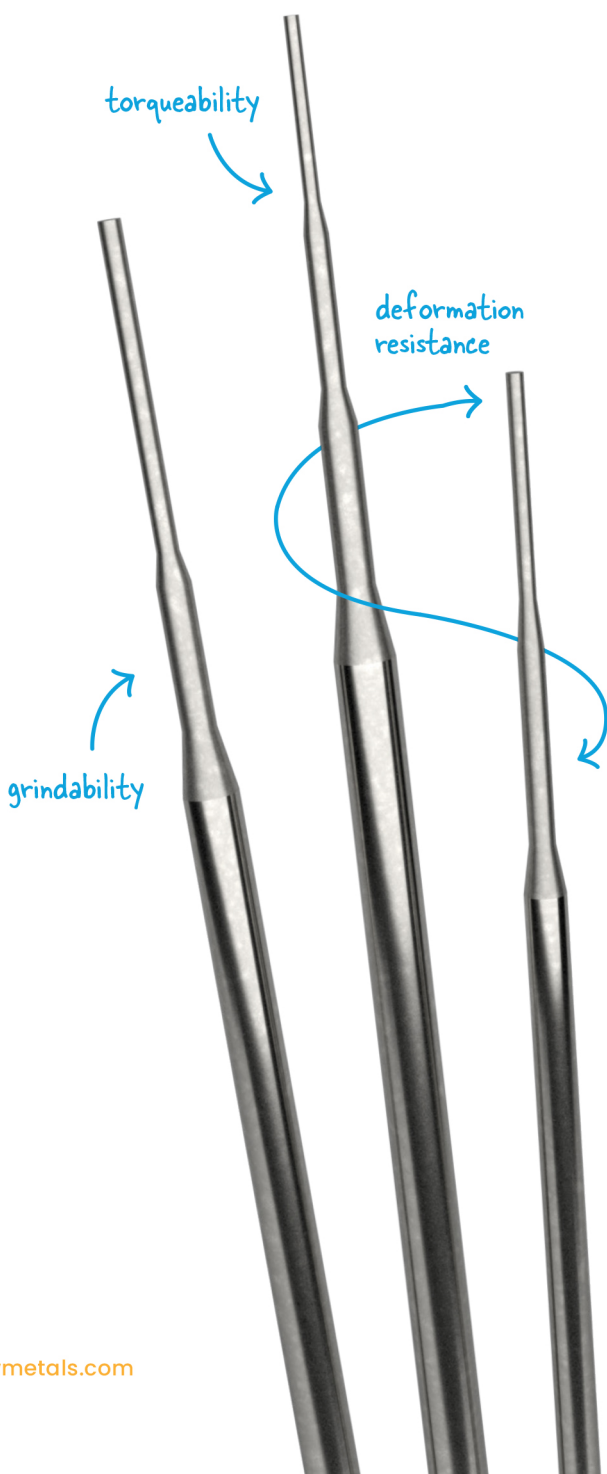




SLT[®] wire

High-performance straight wire



SLT® wire

SLT® wire is straight wire right off the spool, providing the balance of strength, torqueability, stiffness, and flexibility required for guidewires, endoscopes, and other precision interventional tools. Carefully engineered to eliminate process steps and reduce machine downtime, SLT® wire streamlines production without sacrificing performance.

Understanding the benefits of SLT® wire

You can customize SLT® wire for your intended application by selecting one of the two distinct types. You can use the information below to compare and learn more about each type. The surface finish for all SLT® wire is bright.

Type 3

Eliminate the need to straighten and allows removal of up to 90% of the cross-sectional area by taper grinding without requiring heat treatment.

Straightness variance: 0.508 mm per 304.8 mm [0.02 in per 12.00 in] measured per ASTM F2819

Packing specifications: Wire on a spool or cut to length

Minimum hub size: 400x wire diameter

Typical end uses:

- › Orthodontics
- › Endoscopes
- › Suture needles
- › Embolic filters
- › Guidewires

Type 4

Leverage 1:1 torque transmission and remove up to 95% of the cross-sectional area by deep taper grinding without requiring additional heat treatment or resulting in pigtailling.

Straightness variance: 0.254 mm per 304.8 mm [0.01 in per 12.00 in] measured per ASTM F2819

Packing specifications: Cut to length only

Typical end uses:

- › Steerable PTCA
- › Guidewires
- › Endoscopes
- › Other precision applications

Design specifications

The chart below details the material condition, surface finish, and diameter possibilities for each type of SLT® wire.

Types of SLT® wire	Condition	Size range	
		Millimeters (mm)	Inches (in)
Type 3	Hard	0.0508 - 1.0033	0.0020 - 0.0395
	Spring		
	Double spring		
	Ultra spring	0.0508 - 0.9398	0.0020 - 0.0370
	Hyten	0.0508 - 0.8890	0.0020 - 0.0350
Type 4	Spring	0.1981 - 0.8712	0.0078 - 0.0343
	Ultra spring		
	Hyten	0.1981 - 0.7620	0.0078 - 0.0300

The sizes and conditions above reflect SLT® wire made with 304V. If your product need falls outside of the above parameters, please contact your Sales Representative to see how we can meet your specific requirements.

Alloys

SLT® wire is available in the following alloys:

- › 304V
- › 316LVM
- › FWM™ 1058 alloy
- › 35N LT™ alloy
- › MP35N® alloy
- › Ti 6Al-4V ELI
- › Ti-3Al-2.5V



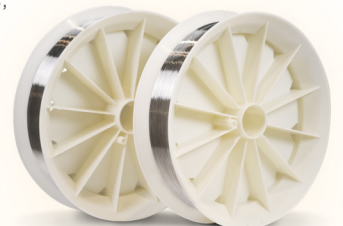
Additional processing capabilities

From spooled product to precision cut lengths, SLT® wire can be prepared to match your production flow. It's also suitable for downstream taper grinding, with the ability to remove up to 95% of the cross-sectional area where design requirements call for it. A range of processing options include:

COATING to provide electrical insulation or chemical separation

LASER ABLATION for adjustable coating coverage

MECHANICAL ASSEMBLY of crimps, fittings, and specialized parts





Scan to visit our website
for additional information
on this topic and more.

LOCATIONS AROUND THE WORLD

Global Headquarters
Fort Wayne, Indiana, U.S.A.

European Headquarters
Castlebar, Co. Mayo, Ireland

Advanced Materials Development
Columbia City, Indiana, U.S.A.

International Sales Support
Shanghai, China
Augsburg, Germany
Potheri Chennai, India
Savyon, Israel
Kobe, Japan
Seoul, Korea

U.S.A. Sales Support
San Mateo, California
Ridgefield, Connecticut
Chanhassen, Minnesota

Find your Sales Representative
at fwmetals.com/find-your-rep



FORT WAYNE METALS

Turning knowledge into solutions.®

9609 Ardmore Avenue
Fort Wayne, Indiana 46809
PHN 260.747.4154
FAX 260.747.0398
EMAIL info@fwmetals.com